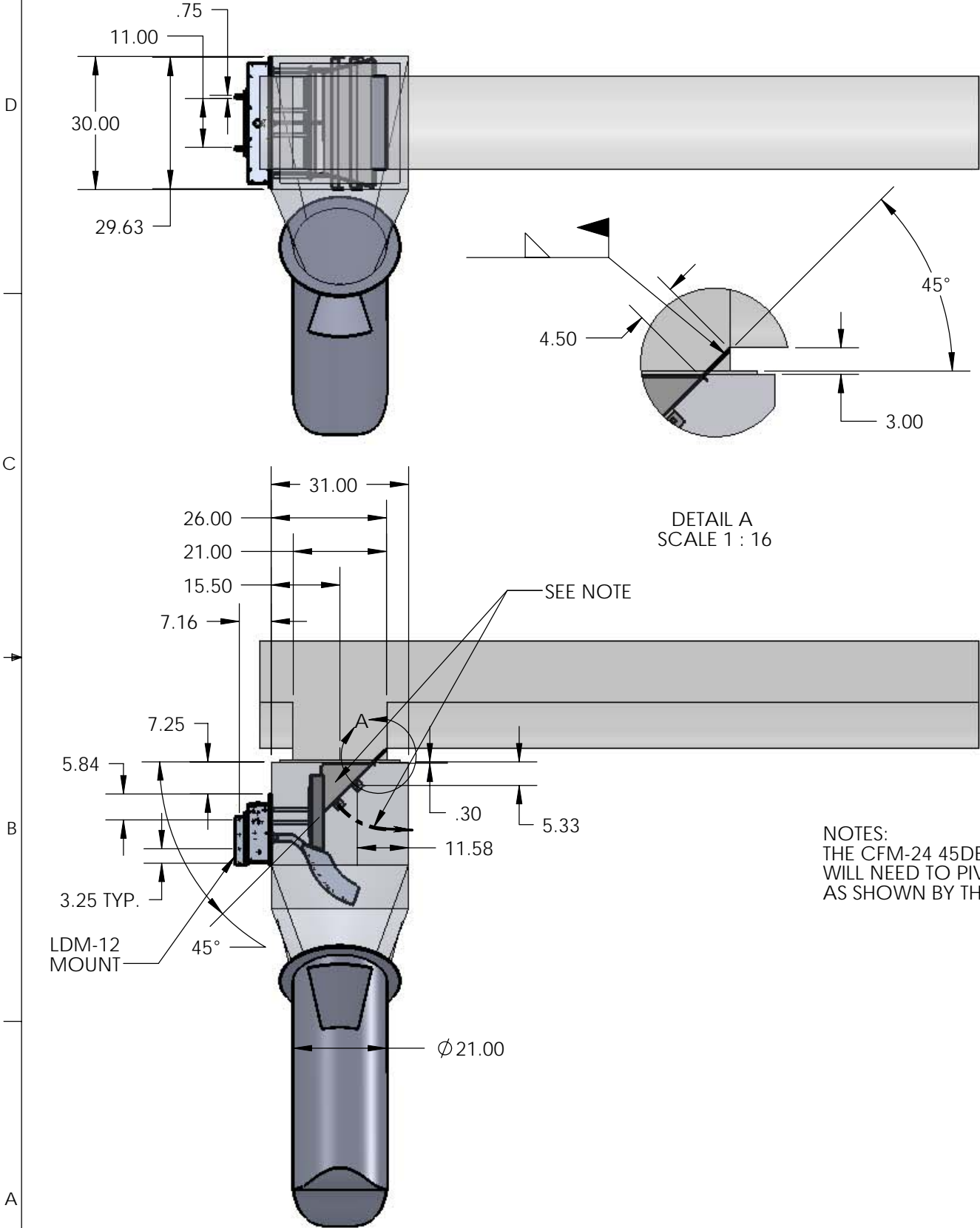
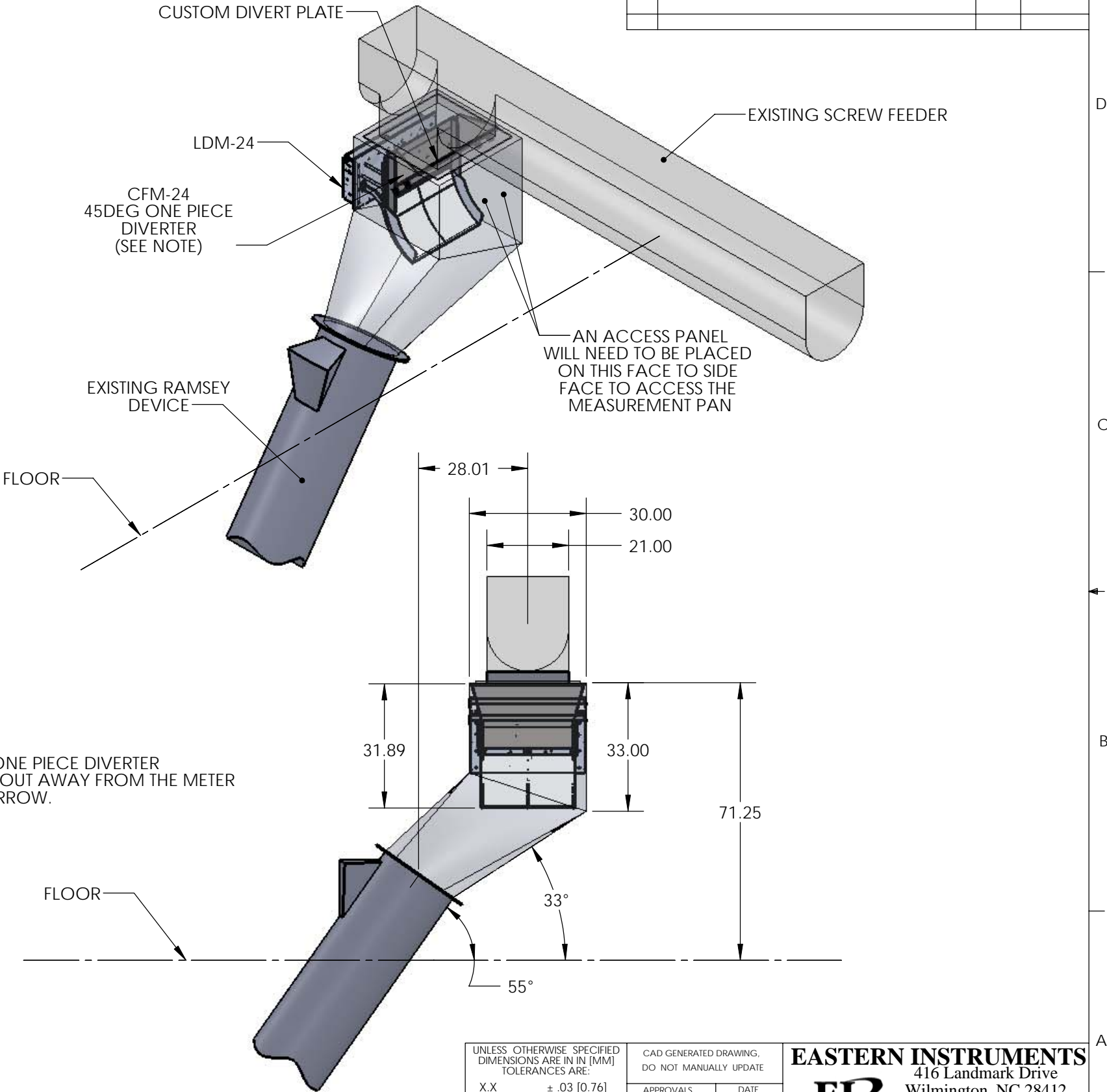


THE INFORMATION CONTAINED IN THIS DRAWING IS THE SOLE PROPERTY OF EASTERN INSTRUMENTS ANY REPRODUCTION IN PART OR WHOLE WITHOUT THE WRITTEN PERMISSION OF EASTERN INSTRUMENTS IS PROHIBITED.

REVISIONS			
REV.	DESCRIPTION	DATE	DRAWN BY



NOTES:
THE CFM-24 45DEG ONE PIECE DIVERTER
WILL NEED TO PIVOT OUT AWAY FROM THE METER
AS SHOWN BY THE ARROW.



UNLESS OTHERWISE SPECIFIED
DIMENSIONS ARE IN IN [MM]
TOLERANCES ARE:
X.X ± .03 [0.76]
X.XX ± .01 [0.25]
X.XXX ± .005 [0.13]
X.XXXX ± .001 [0.03]
X.XXXXX ± .0005 [0.01]
FRACTIONAL: ± 1/32 [0.79]
ANGULAR: ± .25°

MATERIAL
NA
FINISH
32µin [0.8µm]

CAD GENERATED DRAWING,
DO NOT MANUALLY UPDATE

APPROVALS		DATE
DRAWN	BJB	06/16/10
CHECKED		
ENG CHK		
MFG CHK		
PROD CHK		

EASTERN INSTRUMENTS
416 Landmark Drive
Wilmington, NC 28412
sales@easterninstruments.com
www.easterninstruments.com

10-06015 LDM-24 INSTALLATION DIMENSIONAL DRAWING		WEIGHT -
SIZE B	DWG. NO. 10-06015-200D1	REV. -
SCALE : 1:32		CAD FILE: 10-06015-200D1.drw SHEET 1 OF 1